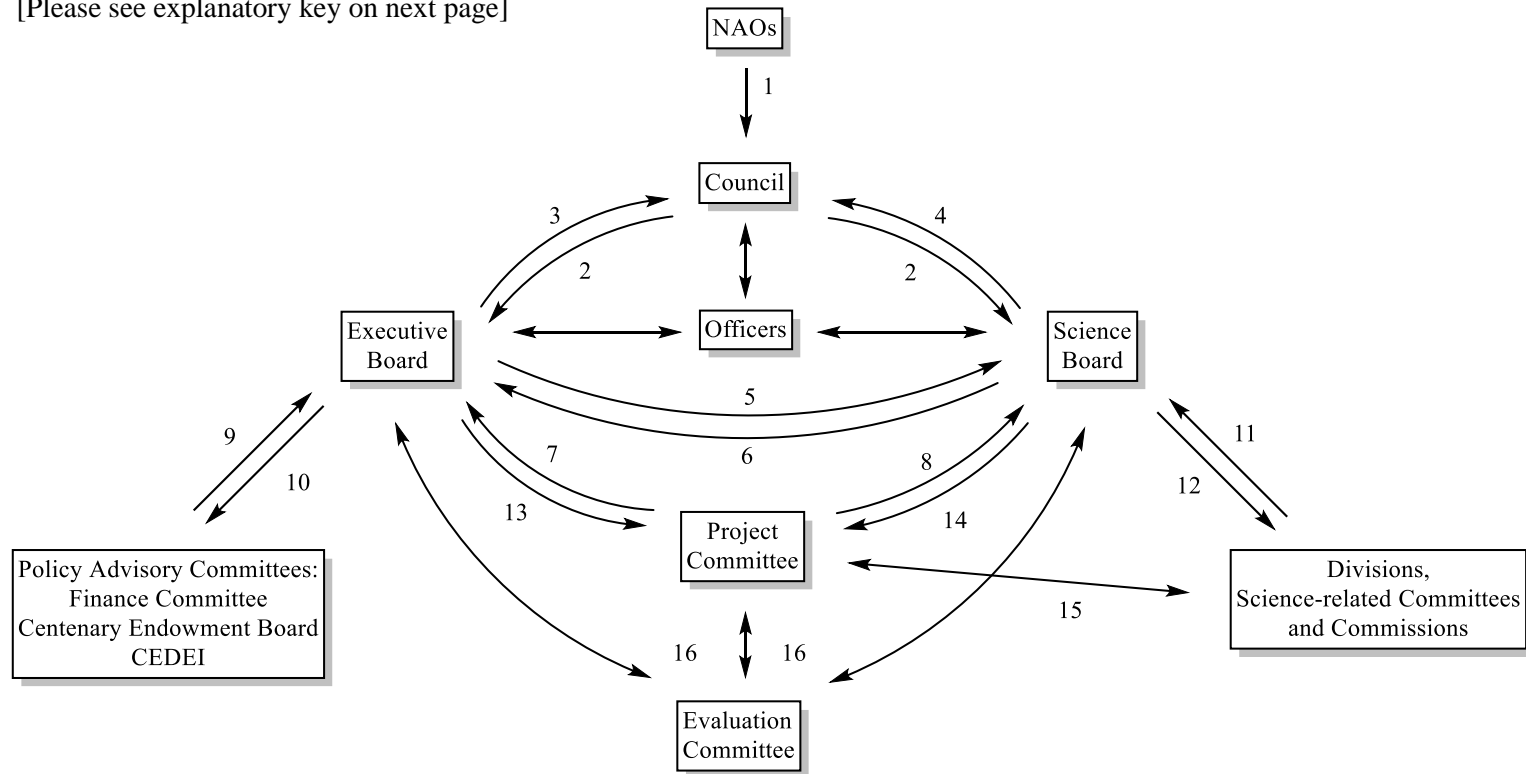


Functional Relationships Diagram *

[Please see explanatory key on next page]



* Note that the Secretariat, under the supervision of the Secretary General and Executive Director, will interact with all of these bodies and facilitate the relationships where required.

Explanatory Key for Functional Relationships Diagram

1. NAOs send voting delegations to Council, propose changes to statutes and bylaws, and raises issues with Council in relation to other IUPAC matters
2. Council approves recommendations/proposals, provides critical feedback, issues instructions
3. Executive Board makes reports and recommendations to Council on governance matters, changes to statutes and bylaws, presents the full budget to the Council
4. Science Board makes recommendations to Council on the scientific direction of IUPAC, and on the science structures within IUPAC (establishment/disestablishment of Divisions and Science-related Committees/Commissions)
5. Executive Board makes an allocation of \$\$\$ to the Science Board
6. Science Board makes recommendations to the Executive Board on strategic investment, likely future budget need, balance between science and project committee/conference support, and provides a detailed budget allocation for Divisions/Committees/Commissions for inclusion in the full budget that goes to Council. Works with Executive Board and Executive Director in relation to General Assembly organisation.
7. Project Committee reviews and provides funding for strategic/organisational level projects (e.g. International Years, ISC Gender Gap Project, GWB)
8. Project Committee requests \$\$\$ from and reports to Science Board on inter-Divisional/Committee funding and projects, oversees conference funding
9. Governance advisory committees report on issues in their portfolios and make recommendations to the Executive Board
10. Executive Board seeks advice and comment from relevant committees
11. Divisions and science-related standing committees provide input on science strategy and priorities, bid for \$\$\$, report on project progress/outcomes, and how their portfolio of work addresses the priorities set by the Science Board
12. Science Board sets scientific strategy and communicates it to Divisions and Committees, allocates \$\$\$ to them, works with Divisions and Committees in relation to Congress organisation. Provides critical feedback on projects and other activities.
13. Executive Board makes an allocation of \$\$\$ to the Project Committee for portfolio of strategic/organisational level projects (e.g. International Years, ISC Gender Gap Project, GWB), conferences
14. Science Board allocates \$\$\$ for interdisciplinary projects and conferences
15. Project Committee and Divisions/Committees/Commissions interact in the review and funding of interdisciplinary projects and conference funding applications
16. Evaluation Committee interacts with other bodies as required to perform their statutory task.