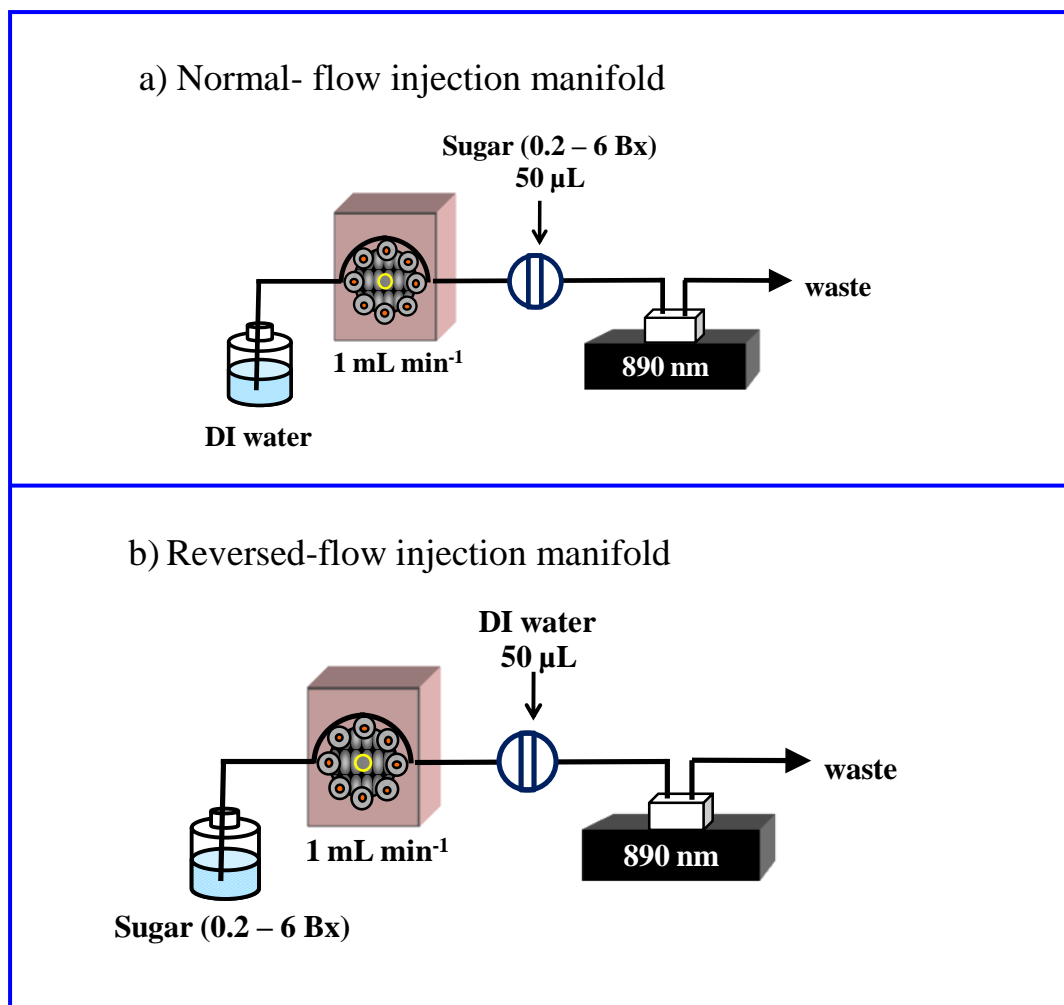
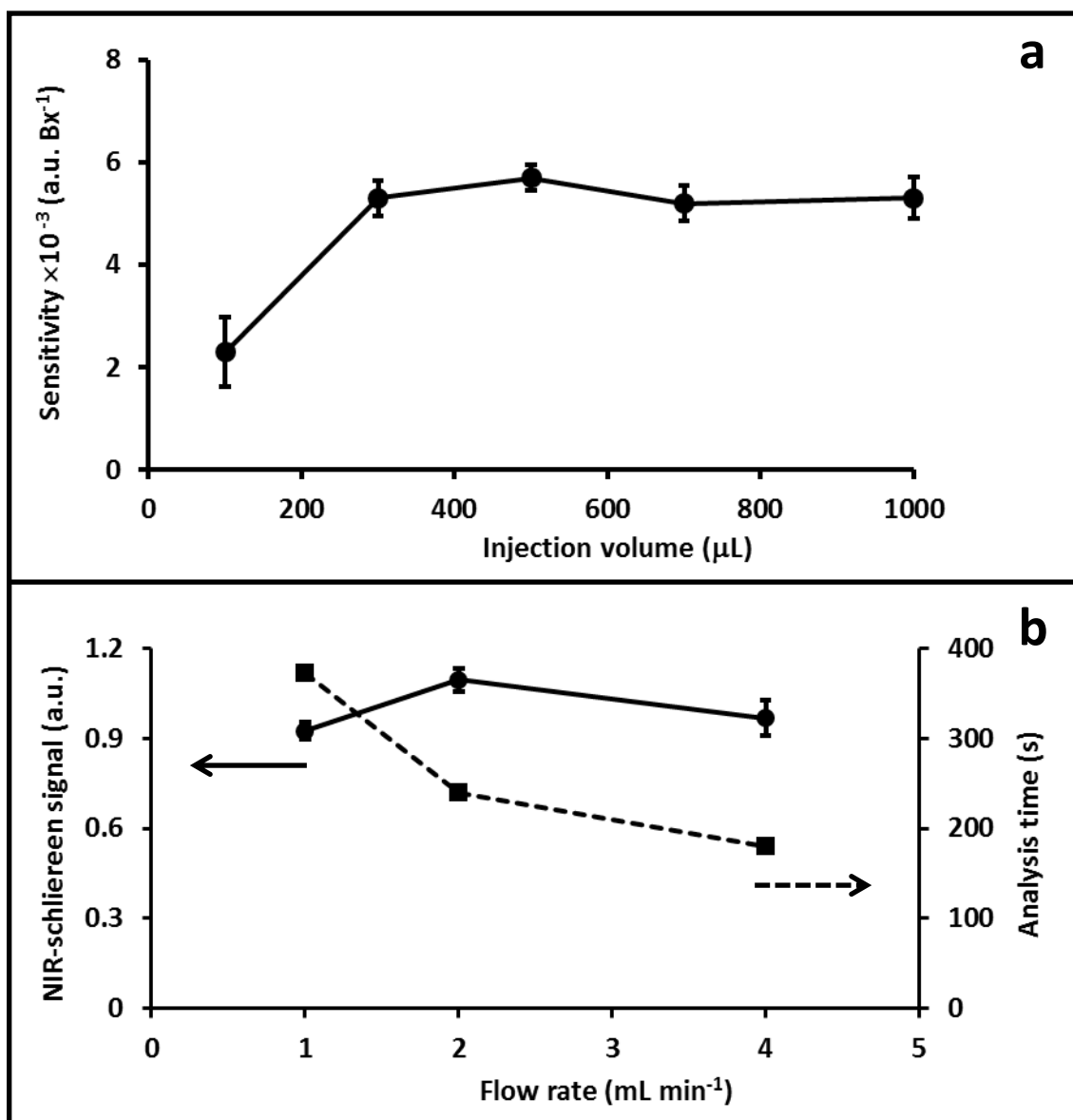


Supplementary Information

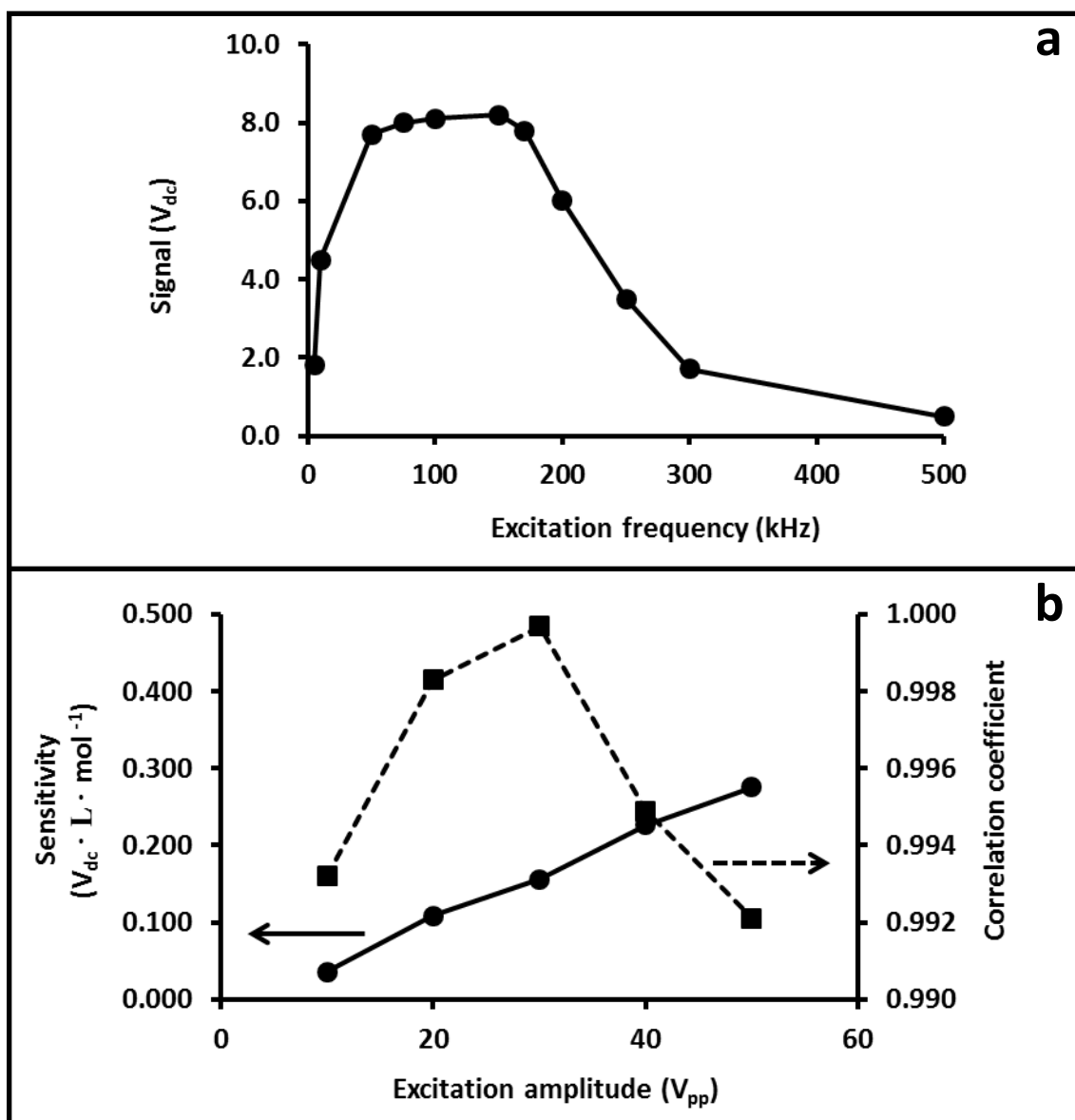
Reagent-free analytical flow methods for the soft drink industry: Efforts for environmentally friendly chemical analysis



**Fig. 1 (Supplement)** The single line FIA manifolds with a spectrophotometric detector used in preliminary study of the schlieren effect and development of a simple method for determination of sugar.



**Fig. 2 (supplement)** Optimization for Brix analysis by using normal-flow injection: (a) injection volume and (b) flow rate.



**Fig 3 (supplement)** C4D results from repetitive injections (300  $\mu$ L) of KCl solutions into a continuous flowing stream of water at 3.5  $mL \cdot min^{-1}$ : (a) dependency of signal on excitation frequency/ 20  $V_{pp}$  and (b) effect of excitation amplitude on sensitivity and on linear correlation coefficient/ fixed frequency at 100 kHz.