

Polymer-embedded nanostructured metal particles modified electrodes and their applications

Shanmugam Manivannan and Ramasamy Ramaraj

SUPPLEMENTARY INFORMATION

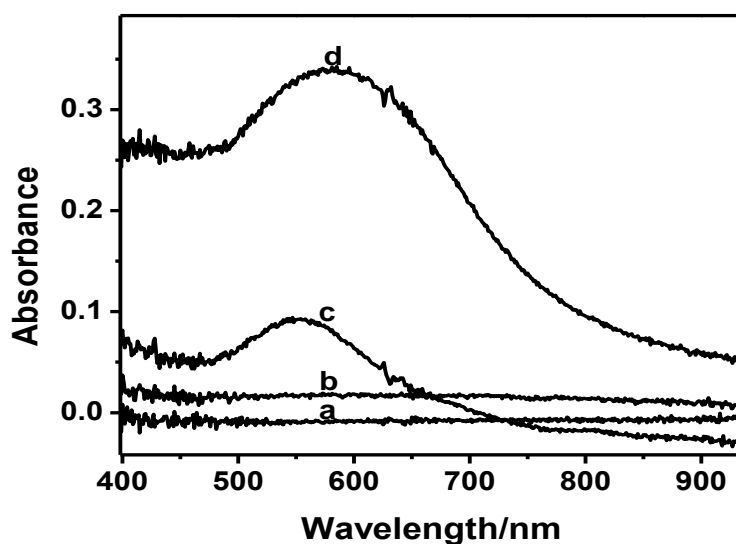


Fig. S1 Diffused reflectance spectra of EDAS matrix (a), β -CD-EDAS composite (b), Au-EDAS NPs (c) and β -CD-Au-EDAS NPs (d) films.

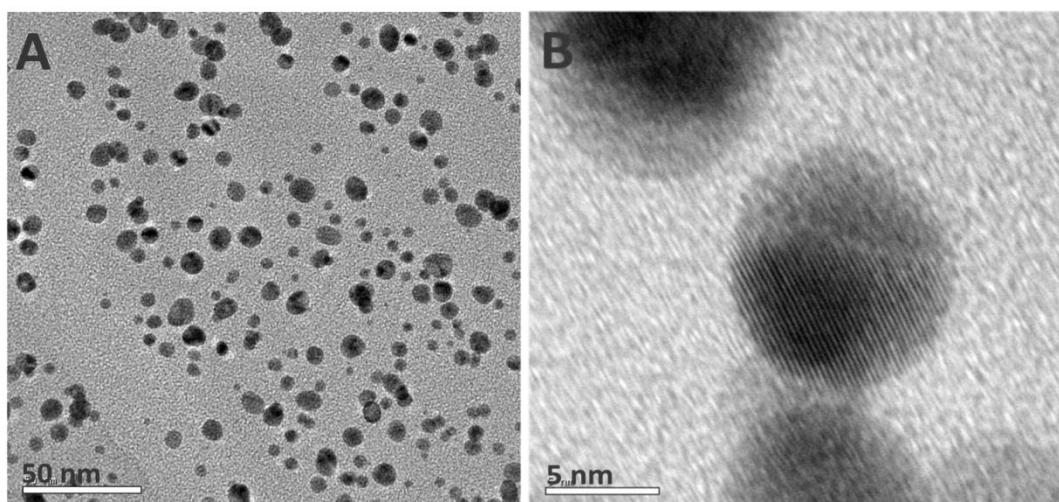


Fig. S2 HRTEM image of core/shell β -CD-Au-EDAS nanostructures (A and B)

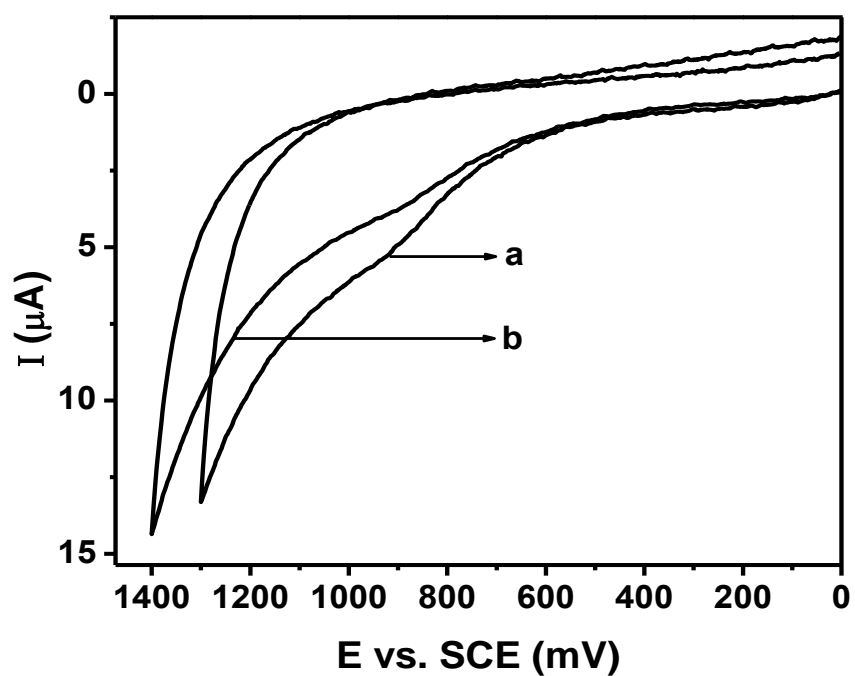


Fig. S3 Cyclic voltammograms recorded for the GC/CD-Au-EDAS NPs modified electrode dipped in 0.5 M of H_2SO_4 (a) and 0.2 M PBS (pH 6.8) (b) at a scan rate of 50 mV s^{-1} .